



深圳凌特华盛科技有限公司
SHENZHEN SMARTBYTE TECHNOLOGY CO.,LTD.

SmartByte

Shenzhen SmartByte Technology Co.,Ltd

Add: D building, Huiqing Science & Technology Park, Dafu Industrial Area, Guanlan, Longhua District, Shenzhen, 518110, China

Website: www.smartbyte-switch.com; E-mail: sales1@evoque-power.com

Tel: +86-755-28687362; On line contact: skype/whatsapp/wechat: +86 13923742917



Industrial Ethernet Solution Catalog



COMPANY PROFILE

Shenzhen SmartByte Technology Co.,Ltd

is specializing in R&D, manufacturing and sales of Networking Transmission & Industrial IoT products, offering the OEM/ODM/EMS service for our customers

SmartByte is one of the few source factory of Ethernet Switches with strong R & D ability in China. The core R & D members all owned the Master's degree from key university and have had more than 15 years product developing & project management experience from China Top Level Networking Communication Manufacturer. SmartByte's factory qualified with ISO14001 and ISO9001, all the products have passed CE/FCC/RoHS and CCC certification. The main products include: Layer 3/ Layer 2+/ Layer 2 Managed Industrial Ethernet Switches, Layer 3/ Layer 2+/ Layer 2 Managed Industrial PoE Switches, Industrial-specific Ethernet Switches, Unmanaged Industrial PoE/Non-PoE switches, Layer 3/Layer 2+/ Layer 2 Managed Ethernet Switches(PoE/Non-PoE), Full Fiber Ports Aggregation Switches, Port Isolated Media Converters, 10G Media Converters, Industrial Media Converters and other Industrial IoT products All these products can be widely used on the transportation, energy, military, industrial automation, smart city, security and etc.

SmartByte, the real source factory of Ethernet Switches with strong R & D ability, is your reliable OEM & ODM partner!

Honor & Certification



ISO9001



ISO14001



Reliability certification report



CCC



Software copyright



Software copyright



Software copyright



Software copyright



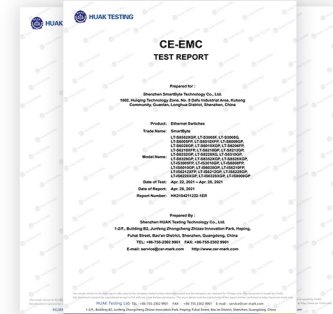
CE



FCC

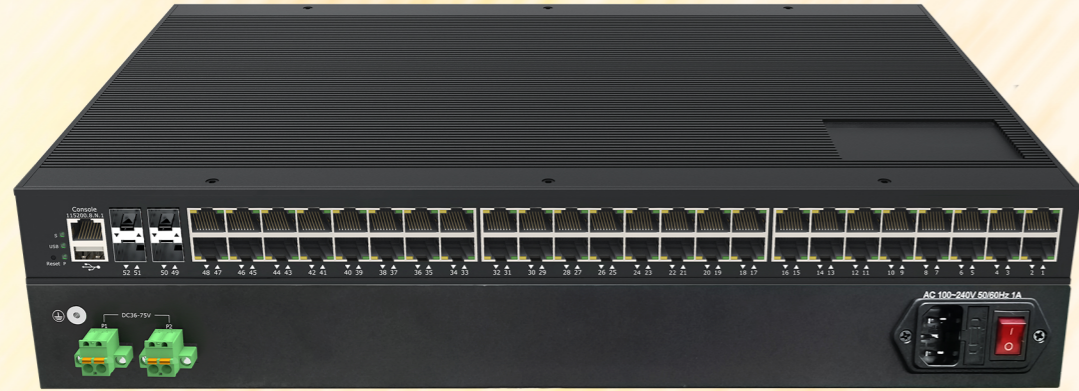


RoHS



CE/FCC/RoHS test report

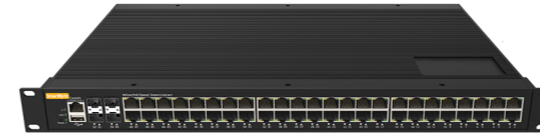
Layer 3 Managed Industrial Ethernet Switches



Features

- AC/DC redundant power supply with polarity reverse/over-voltage/over-current protection
- Support USB one key configuration and upgrading
- Support DI/DO/RS485/Modbus
- Layer 3 feature: Support RIPv1/v2, OSPFv2, BGP4, ECMP, VRRP, IS-ISv4, IPv4/IPv6 static routing, 13K routing entry
- Layer 2 features: VLAN; ERPS, STP/RSTP/MSTP; Link aggregation, IGMP snooping, port mirroring, QinQ, 802.1X, port isolation, RMON, NTP client, DHCP snooping/client, Ping/Tracert test, ACL, QoS and SFP DDM function
- Management and maintenance: IPv4 and IPv6 management; Support Web, SNMP, CLI, Telnet/SSH management method; Support user management, system log, configuration upload/download through web interface, firmware upgrade via HTTP/TFTP/USB
- Support G.8032 ERPS protocol, recovery time $\leq 20\text{ms}$
- Support 6KV surge protection and ESD: Air-15kV, Contact-8kV Protection
- IP40 fan-less, rack-mount/Din-rail hardware design optional
- Operation temperature: $-40\text{ }^{\circ}\text{C} \sim +75\text{ }^{\circ}\text{C}$

LT-IS6552XG-4XS48GT



48*10/100/1000Base-T+4*1G/2.5/10GBase-X SFP+
Layer 3 Managed Industrial Rack-mount Ethernet Switch

LT-IS6528XG-4XS16GX8GC



16*100/1000Base-X SFP+8*1G Combo+4*1G/2.5/10GBase-X SFP+
Layer 3 Managed Industrial Rack-mount Ethernet Switch

LT-IS6528XG-4XS16GT8GC



16*10/100/1000Base-T+8*Gigabit Combo+4*1G/2.5/10GBase-X SFP+
Layer 3 Managed Industrial Rack-mount Ethernet Switch

LT-IS6528XG-4XS24GT-U



24*10/100/1000Base-T + 4*1G/2.5/10GBase-X SFP+
Layer 3 Managed Industrial Rack-mount Ethernet Switch

LT-IS6528XG-4XS24GT



24*10/100/1000Base-T + 4*1G/2.5/10GBase-X SFP+
Layer 3 Managed Industrial Ethernet Switch

LT-IS6520XG-4XS16GT



16*10/100/1000Base-T + 4*1G/2.5/10GBase-X SFP+
Layer 3 Managed Industrial Ethernet Switch

LT-IS6520XG-4XS8GX8GT



8*10/100/1000Base-T+8*100/1000Base-X SFP+4*1G/2.5/10GBase-X SFP+
Layer 3 Managed Industrial Ethernet Switch

LT-IS6516XG-4XS4GX8GT



8*10/100/1000Base-T+4*100/1000Base-X SFP+4*1G/2.5/10GBase-X SFP+
Layer 3 Managed Industrial Ethernet Switch

LT-IS6518XG-2XS16GT



16*10/100/1000Base-T + 2*1G/2.5G/10GBase-X SFP+
Layer 3 Managed Industrial Ethernet Switch

Layer 2+ Managed Industrial Ethernet Switches



Features

- AC/DC redundant power supply with polarity reverse/over-voltage/over-current protection
- Support USB one key configuration and upgrading
- Support DI/DO/RS485/Modbus
- Layer 3 feature: Support IPv4/IPv6 static routing
- Layer 2 features: VLAN; ERPS, STP/RSTP/MSTP; Link aggregation, IGMP snooping, port mirroring, QinQ, 802.1X, port isolation, RMON, NTP client, DHCP snooping/client, Ping/Tracert test, ACL, QoS and SFP DDM function
- Management and maintenance: IPv4 and IPv6 management; Support Web, SNMP, CLI, Telnet/SSH management method; Support user management, system log, configuration upload/download through web interface, firmware upgrade via HTTP/TFTP/USB
- Support G.8032 ERPS protocol, recovery time ≤20ms
- Support 6KV surge protection and ESD: Air-15kV, Contact-8kV Protection
- IP40 fan-less, rack-mount/Din-rail hardware design optional
- Operation temperature: -40 °C ~+ 75 °C

10G Uplink Layer 2+ Series

LT-IS6352XG-4XS48GT



48*10/100/1000Base-T + 4*1G/2.5/10GBase-X SFP+
Layer 2+ Managed Industrial Rack-mount Ethernet Switch

LT-IS6328XG-4XS16GX8GC



16*100/1000Base-X SFP+8*1G Combo+ 4*1G/2.5/10GBase-X SFP+
Layer 2+ Managed Industrial Rack-mount Ethernet Switch

LT-IS6328XG-4XS16GT8GC



16*10/100/1000Base-T+8*Gigabit Combo+4*1G/2.5/10GBase-X SFP+
Layer 2+ Managed Industrial Rack-mount Ethernet Switch

LT-IS6328XG-4XS24GT-U



24*10/100/1000Base-T + 4*1G/2.5/10GBase-X SFP+
Layer 2+ Managed Industrial Rack-mount Ethernet Switch

LT-IS6328XG-4XS24GT



24*10/100/1000Base-T + 4*1G/2.5/10GBase-X SFP+
Layer 2+ Managed Industrial Ethernet Switch

LT-IS6320XG-4XS16GT



16*10/100/1000Base-T + 4*1G/2.5/10GBase-X SFP+
Layer 2+ Managed Industrial Ethernet Switch

LT-IS6320XG-4XS8GX8GT



8*10/100/1000Base-T+8*100/1000Base-X SFP+4*1G/2.5/10GBase-X SFP+
Layer 2+ Managed Industrial Ethernet Switch

LT-IS6316XG-4XS4GX8GT



8*10/100/1000Base-T+4*100/1000Base-X SFP+4*1G/2.5/10GBase-X SFP+
Layer 2+ Managed Industrial Ethernet Switch

LT-IS6318XG-2XS16GT



16*10/100/1000Base-T + 2*1G/2.5G/10GBase-X SFP+
Layer 2+ Managed Industrial Ethernet Switch

Full Gigabit Layer 2+ Series

LT-IS6352G-4GX48GT



48*10/100/1000Base-T + 4*1G/2.5GBase-X SFP
Layer 2+ Managed Industrial Rack-mount Ethernet Switch

LT-IS6328G-20GX8GC



16*100/1000Base-X SFP+8*1G Combo+ 4*1G/2.5GBase-X SFP
Layer 2+ Managed Industrial Rack-mount Ethernet Switch

LT-IS6328G-4GX16GT8GC



16*10/100/1000Base-T+8*Gigabit Combo+4*1G/2.5GBase-X SFP
Layer 2+ Managed Industrial Rack-mount Ethernet Switch

LT-IS6328G-4GX24GT-U



24*10/100/1000Base-T + 4*1G/2.5GBase-X SFP
Layer 2+ Managed Industrial Rack-mount Ethernet Switch

LT-IS6328G-4GX24GT



24*10/100/1000Base-T + 4*1G/2.5GBase-X SFP
Layer 2+ Managed Industrial Ethernet Switch

LT-IS6320G-4GX16GT



16*10/100/1000Base-T + 4*1G/2.5GBase-X SFP
Layer 2+ Managed Industrial Ethernet Switch

LT-IS6320G-12GX8GT



8*10/100/1000Base-T + 8*100/1000Base-X SFP + 4*1G/2.5GBase-X SFP
Layer 2+ Managed Industrial Ethernet Switch

LT-IS6316G-8GX8GT



8*10/100/1000Base-T + 4*100/1000Base-X SFP + 4*1G/2.5GBase-X SFP
Layer 2+ Managed Industrial Ethernet Switch

LT-IS6318G-2GX16GT



16*10/100/1000Base-T + 2*1G/2.5GBase-X SFP
Layer 2+ Managed Industrial Ethernet Switch

Layer 2 Managed Industrial Ethernet Switches



Features

- Redundant power supply with polarity reverse/over-voltage/over-current protection
- USB one key configuration and upgrading optional
- DI/DO/RS485/Modbus are optional
- Layer 2 features: VLAN; ERPS, STP/RSTP/MSTP; Link aggregation, IGMP snooping, port mirroring, QinQ, 802.1X, port isolation, RMON, NTP client, DHCP snooping/client, Ping/Tracert test, ACL, QoS and SFP DDM function
- Management and maintenance: IPv4 and IPv6 management; Support Web, SNMP, CLI, Telnet/SSH management method; Support user management, system log, configuration upload/download through web interface, firmware upgrade via HTTP/TFTP/USB
- Support G.8032 ERPS protocol, recovery time $\leq 20\text{ms}$
- Support 6KV surge protection and ESD: Air-15kV, Contact-8kV Protection
- IP40 fan-less, rack-mount/Din-rail hardware design optional
- Operation temperature: $-40\text{ }^{\circ}\text{C} \sim +75\text{ }^{\circ}\text{C}$

10G Uplink Layer 2 Series

LT-IS6252XG-4XS48GT



48*10/100/1000Base-T + 4*1G/2.5/10GBase-X SFP+
Layer 2 Managed Industrial Rack-mount Ethernet Switch

LT-IS6228XG-4XS16GX8GC



16*100/1000Base-X SFP+8*1G Combo+ 4*1G/2.5/10GBase-X SFP+
Layer 2 Managed Industrial Rack-mount Ethernet Switch

LT-IS6228XG-4XS16GT8GC



16*10/100/1000Base-T+8*Gigabit Combo+4*1G/2.5/10GBase-X SFP+
Layer 2 Managed Industrial Rack-mount Ethernet Switch

LT-IS6228XG-4XS24GT-U



24*10/100/1000Base-T + 4*1G/2.5/10GBase-X SFP+
Layer 2 Managed Industrial Rack-mount Ethernet Switch

LT-IS6228XG-4XS24GT



24*10/100/1000Base-T + 4*1G/2.5/10GBase-X SFP+
Layer 2 Managed Industrial Ethernet Switch

LT-IS6220XG-4XS16GT



16*10/100/1000Base-T + 4*1G/2.5/10GBase-X SFP+
Layer 2 Managed Industrial Ethernet Switch

LT-IS6220XG-4XS8GX8GT



8*10/100/1000Base-T+8*100/1000Base-X SFP+4*1G/2.5/10GBase-X SFP+
Layer 2 Managed Industrial Ethernet Switch

LT-IS6218XG-2XS16GT



16*10/100/1000Base-T + 2*1G/2.5G/10GBase-X SFP+
Layer 2 Managed Industrial Ethernet Switch

LT-IS6216XG-4XS4GX8GT



8*10/100/1000Base-T+4*100/1000Base-X SFP+4*1G/2.5/10GBase-X SFP+
Layer 2 Managed Industrial Ethernet Switch

LT-IS6212XG-4XS8GT



8*10/100/1000Base-T + 4*1G/2.5G/10G Base-X SFP+
Layer 2 Managed Industrial Ethernet Switch

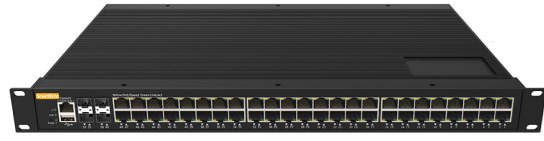
LT-IS6210XG-2XS8GT



8*10/100/1000Base-T + 2*1G/2.5G/10G Base-X SFP+
Layer 2 Managed Industrial Ethernet Switch

Full Gigabit Layer 2 Series

LT-IS6252G-4GX48GT



48*10/100/1000Base-T + 4*1G/2.5GBase-X SFP
Layer 2 Managed Industrial Rack-mount Ethernet Switch

LT-IS6228G-20GX8GC



16*100/1000Base-X SFP+8*1G Combo+ 4*1G/2.5GBase-X SFP
Layer 2 Managed Industrial Rack-mount Ethernet Switch

LT-IS6228G-4GX16GT8GC



16*10/100/1000Base-T+8*Gigabit Combo+4*1G/2.5GBase-X SFP
Layer 2 Managed Industrial Rack-mount Ethernet Switch

LT-IS6228G-4GX24GT-U



24*10/100/1000Base-T + 4*1G/2.5GBase-X SFP
Layer 2 Managed Industrial Rack-mount Ethernet Switch

LT-IS6228G-4GX24GT



24*10/100/1000Base-T + 4*1G/2.5GBase-X SFP
Layer 2 Managed Industrial Ethernet Switch

LT-IS6220G-4GX16GT



16*10/100/1000Base-T + 4*1G/2.5GBase-X SFP
Layer 2 Managed Industrial Ethernet Switch

LT-IS6220G-12GX8GT



8*10/100/1000Base-T + 8*100/1000Base-X SFP + 4*1G/2.5GBase-X SFP
Layer 2 Managed Industrial Ethernet Switch

LT-IS6218G-2GX16GT



16*10/100/1000Base-T + 2*1G/2.5GBase-X SFP
Layer 2 Managed Industrial Ethernet Switch

LT-IS6216G-8GX8GT



8*10/100/1000Base-T + 4*100/1000Base-X SFP + 4*1G/2.5GBase-X SFP
Layer 2 Managed Industrial Ethernet Switch

LT-IS6212G-4GX8GT



8*10/100/1000Base-T + 4*1G/2.5GBase-X SFP
Layer 2 Managed Industrial Ethernet Switch

LT-IS6210G-2GX8GT-E



8*10/100/1000Base-T + 2*1G/2.5GBase-X SFP
Layer 2 Managed Industrial Ethernet Switch

LT-IS6210G-2GX8GT-D



8*10/100/1000Base-T + 2*1G/2.5GBase-X SFP
Layer 2 Managed Industrial Ethernet Switch

LT-IS3210G-2GX8GT



8*10/100/1000Base-T + 2*1G/2.5GBase-X SFP
Layer 2 Managed Industrial Ethernet Switch

LT-IS6206G-2GX4GT-E



4*10/100/1000Base-T + 2*1G/2.5GBase-X SFP
Layer 2 Managed Industrial Ethernet Switch

LT-IS6206G-2GX4GT-D



4*10/100/1000Base-T + 2*100/1000Base-X SFP
Layer 2 Managed Industrial Ethernet Switch

LT-IS3206G-2GX4GT



4*10/100/1000Base-T + 2*100/1000Base-X SFP
Layer 2 Managed Industrial Ethernet Switch

LT-IS3205G-1GX4GT



4*10/100/1000Base-T + 1*100/1000Base-X SFP
Layer 2 Managed Industrial Ethernet Switch

10/100M Layer 2 Series

LT-IS3210XF-2GX8TX



8*10/100Base-TX + 2*1000Base-X SFP
Layer 2 Managed Industrial Ethernet Switch

LT-IS3206F-2FX4TX



4*10/100Base-TX + 2*100Base-FX SFP
Layer 2 Managed Industrial Ethernet Switch

LT-IS3205F-1FX4TX



4*10/100Base-TX + 1*100Base-FX SFP
Layer 2 Managed Industrial Ethernet Switch

Layer 3 Managed Industrial PoE Switches



Features

- DC redundant power supply with polarity reverse/over-voltage/over-current protection
- Complies with IEEE802.3af PoE and IEEE802.3at PoE+ standard
- Support USB one key configuration and upgrading
- Support DI/DO/RS485/Modbus
- Layer 3 feature: Support RIPv1/v2, OSPFv2, BGP4, ECMP, VRRP, IS-ISv4, IPv4/IPv6 static routing, 13K routing entry
- Layer 2 features: VLAN; ERPS, STP/RSTP/MSTP; Link aggregation, IGMP snooping, port mirroring, QinQ, 802.1X, port isolation, RMON, NTP client, DHCP snooping/client, Ping/Tracert test, ACL, QoS and SFP DDM function
- Management and maintenance: IPv4 and IPv6 management, PoE management; Support Web, SNMP, CLI, Telnet/SSH management method; Support user management, system log, configuration upload/download through web interface, firmware upgrade via HTTP/TFTP/USB
- Support G.8032 ERPS protocol, recovery time $\leq 20\text{ms}$
- Support 6KV surge protection and ESD: Air-15kV, Contact-8kV Protection
- IP40 fan-less, rack-mount or Din-rail hardware design optional
- Operation temperature: $-40\text{ }^{\circ}\text{C} \sim +75\text{ }^{\circ}\text{C}$

LT-IS6528XGP-4XS16GT8GC



16*10/100/1000Base-T PoE+8*Gigabit Combo+4*1G/2.5/10GBase-X SFP+
Layer 3 Managed Industrial Rack-mount PoE Switch

LT-IS6528XGP-4XS24GT-U



24*10/100/1000Base-T PoE + 4*1G/2.5/10GBase-X SFP+
Layer 3 Managed Industrial Rack-mount PoE Switch

LT-IS6516XGP-4XS4GX8GT



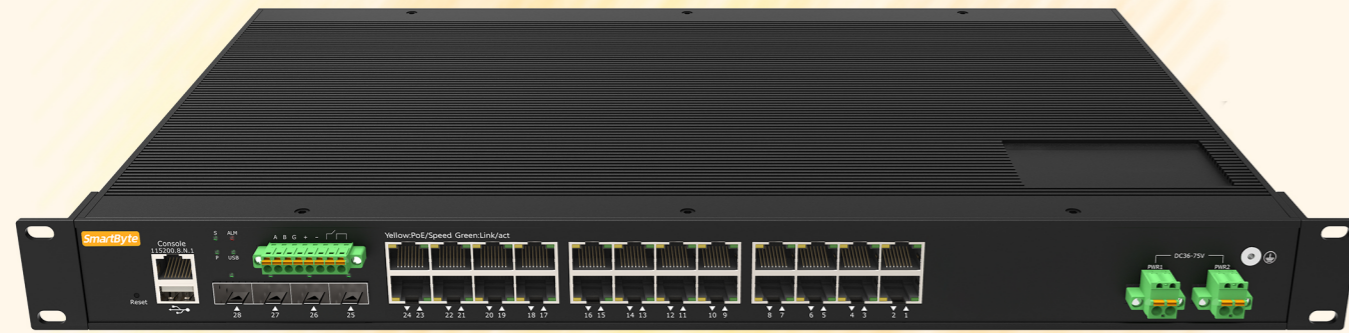
8*10/100/1000Base-T PoE+4*100/1000Base-X SFP+4*1G/2.5/10GBase-X SFP+
Layer 3 Managed Industrial PoE Switch

LT-IS6518XGP-2XS16GT



16*10/100/1000Base-T PoE + 2*1G/2.5G/10GBase-X SFP+
Layer 3 Managed Industrial PoE Switch

Layer 2+ Managed Industrial PoE Switches



Features

- DC/DC redundant power supply with polarity reverse/over-voltage/over-current protection
- Support USB one key configuration and upgrading
- Support DI/DO/RS485/Modbus
- Layer 3 feature: Support IPv4/IPv6 static routing
- Layer 2 features: VLAN; ERPS, STP/RSTP/MSTP; Link aggregation, IGMP snooping, port mirroring, QinQ, 802.1X, port isolation, RMON, NTP client, DHCP snooping/client, Ping/Tracert test, ACL, QoS and SFP DDM function
- Management and maintenance: IPv4 and IPv6 management, PoE management; Support Web, SNMP, CLI, Telnet/SSH management method; Support user management, system log, configuration upload/download through web interface, firmware upgrade via HTTP/TFTP/USB
- Support G.8032 ERPS protocol, recovery time $\leq 20\text{ms}$
- Support 6KV surge protection and ESD: Air-15kV, Contact-8kV Protection
- IP40 fan-less, rack-mount or Din-rail hardware design optional
- Operation temperature: $-40\text{ }^{\circ}\text{C} \sim +75\text{ }^{\circ}\text{C}$

10G Uplink Layer 2+ Series

LT-IS6328XGP-4XS16GT8GC



16*10/100/1000Base-T PoE+8*Gigabit Combo+4*1G/2.5/10GBase-X SFP+
Layer 2+ Managed Industrial Rack-mount PoE Switch

LT-IS6328XGP-4XS24GT-U



24*10/100/1000Base-T PoE + 4*1G/2.5/10GBase-X SFP+
Layer 2+ Managed Industrial Rack-mount PoE Switch

LT-IS6316XGP-4XS4GX8GT



8*10/100/1000Base-T PoE+4*100/1000Base-X SFP+4*1G/2.5/10GBase-X SFP+
Layer 2+ Managed Industrial PoE Switch

LT-IS6318XGP-2XS16GT



16*10/100/1000Base-T PoE + 2*1G/2.5G/10GBase-X SFP+
Layer 2+ Managed Industrial PoE Switch

Full Gigabit Layer 2+ Series

LT-IS6328GP-4GX16GT8GC



16*10/100/1000Base-T PoE + 8*Gigabit Combo + 4*1G/2.5GBase-X SFP
Layer 2+ Managed Industrial Rack-mount PoE Switch

LT-IS6328GP-4GX24GT-U



24*10/100/1000Base-T PoE + 4*1G/2.5GBase-X SFP
Layer 2+ Managed Industrial Rack-mount PoE Switch

LT-IS6316GP-8GX8GT



8*10/100/1000Base-T PoE + 8*100/1000Base-X SFP
Layer 2+ Managed Industrial PoE Switch

LT-IS6318GP-2GX16GT



16*10/100/1000Base-T PoE + 2*1G/2.5GBase-X SFP
Layer 2+ Managed Industrial PoE Switch

Layer 2 Managed Industrial PoE Switches



Features

- Redundant DC/DC power supply with polarity reverse/over-voltage/over-current protection
- USB one key configuration and upgrading optional
- DI/DO/RS485/Modbus are optional
- Layer 2 features: VLAN; ERPS, STP/RSTP/MSTP; Link aggregation, IGMP snooping, port mirroring, QinQ, 802.1X, port isolation, RMON, NTP client, DHCP snooping/client, Ping/Tracert test, ACL, QoS and SFP DDM function
- Management and maintenance: IPv4 and IPv6 management, PoE management; Support Web, SNMP, CLI, Telnet/SSH management method; Support user management, system log, configuration upload/download through web interface, firmware upgrade via HTTP/TFTP/USB
- Support G.8032 ERPS protocol, recovery time $\leq 20\text{ms}$
- Support 6KV surge protection and ESD: Air-15kV, Contact-8kV Protection
- IP40 fan-less, rack-mount/Din-rail hardware design optional
- Operation temperature: $-40\text{ }^{\circ}\text{C} \sim +75\text{ }^{\circ}\text{C}$

10G Uplink Layer 2 Series

LT-IS6228XGP-4XS16GT8GC



16*10/100/1000Base-T PoE + 8*Gigabit Combo+4*1G/2.5/10GBase-X SFP+
Layer 2 Managed Industrial Rack-mount PoE Switch

LT-IS6228XGP-4XS24GT-U



24*10/100/1000Base-T PoE + 4*1G/2.5/10GBase-X SFP+
Layer 2 Managed Industrial Rack-mount PoE Switch

LT-IS6218XGP-2XS16GT



16*10/100/1000Base-T PoE + 2*1G/2.5G/10GBase-X SFP+
Layer 2 Managed Industrial PoE Switch

LT-IS6216XGP-4XS4GX8GT



8*10/100/1000Base-T PoE+4*100/1000Base-X SFP+4*1G/2.5/10GBase-X SFP+
Layer 2 Managed Industrial PoE Switch

LT-IS6212XGP-4XS8GT



8*10/100/1000Base-T PoE + 4*1G/2.5G/10G Base-X SFP+
Layer 2 Managed Industrial PoE Switch

LT-IS6210XGP-2XS8GT



8*10/100/1000Base-T PoE + 2*1G/2.5G/10G Base-X SFP+
Layer 2 Managed Industrial PoE Switch

Full Gigabit Layer 2 Series

LT-IS6228GP-4GX16GT8GC



16*10/100/1000Base-T PoE + 8*Gigabit Combo+4*1G/2.5GBase-X SFP
Layer 2 Managed Industrial Rack-mount PoE Switch

LT-IS6228GP-4GX24GT-U



24*10/100/1000Base-T PoE + 4*1G/2.5GBase-X SFP
Layer 2 Managed Industrial Rack-mount PoE Switch

LT-IS6218GP-2GX16GT



16*10/100/1000Base-T PoE + 2*1G/2.5GBase-X SFP
Layer 2 Managed Industrial PoE Switch

LT-IS6216GP-8GX8GT



8*10/100/1000Base-T PoE+4*100/1000Base-X SFP+4*1G/2.5GBase-X SFP
Layer 2 Managed Industrial PoE Switch

LT-IS6212GP-4GX8GT



8*10/100/1000Base-T PoE + 4*1G/2.5GBase-X SFP
Layer 2 Managed Industrial PoE Switch

LT-IS6210GP-2GX8GT-E



8*10/100/1000Base-T PoE + 4*1G/2.5GBase-X SFP
Layer 2 Managed Industrial PoE Switch

LT-IS6210GP-2GX8GT-D



8*10/100/1000Base-T PoE + 2*1G/2.5GBase-X SFP
Layer 2 Managed Industrial PoE Switch

LT-IS3210GP-2GX8GT



8*10/100/1000Base-T PoE + 2*1G/2.5GBase-X SFP
Layer 2 Managed Industrial PoE Switch

LT-IS6206GP-2GX4GT-E



4*10/100/1000Base-T PoE + 2*1G/2.5GBase-X SFP
Layer 2 Managed Industrial PoE Switch

LT-IS6206GP-2GX4GT-D



4*10/100/1000Base-T PoE + 2*100/1000Base-X SFP
Layer 2 Managed Industrial PoE Switch

LT-IS3206GP-2GX4GT



4*10/100/1000Base-T PoE + 2*100/1000Base-X SFP
Layer 2 Managed Industrial PoE Switch

LT-IS3205GP-1GX4GT



4*10/100/1000Base-T PoE + 1*100/1000Base-X SFP
Layer 2 Managed Industrial PoE Switch

10/100M Layer 2 Series

LT-IS3210XFP-2GX8TX



8*10/100Base-TX + 2*1000Base-X SFP
Layer 2 Managed Industrial PoE Switch

LT-IS3206FP-2FX4TX



4*10/100Base-TX PoE + 2*100Base-FX SFP
Layer 2 Managed Industrial PoE Switch

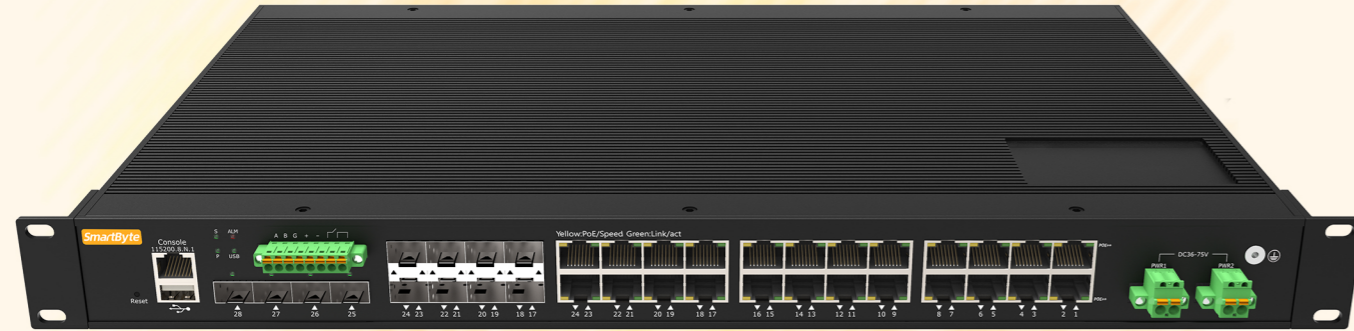
LT-IS3205FP-1FX4TX



4*10/100Base-TX PoE + 1*100Base-FX SFP
Layer 2 Managed Industrial PoE Switch

Managed Industrial PoE++ Switches

Layer 3 Managed Industrial PoE++ Switches



Features

- DC redundant power supply with polarity reverse/over-voltage/over-current protection
- Complies with IEEE802.3af PoE, IEEE802.3at PoE+ and IEEE802.3bt PoE++ standard
- Support USB one key configuration and upgrading
- Support DI/DO/RS485/Modbus
- Layer 3 feature: Support RIPv1/v2, OSPFv2, BGP4, ECMP, VRRP, IS-ISv4, IPv4/IPv6 static routing, 13K routing entry
- Layer 2 features: VLAN; ERPS, STP/RSTP/MSTP; Link aggregation, IGMP snooping, port mirroring, QinQ, 802.1X, port isolation, RMON, NTP client, DHCP snooping/client, Ping/Tracert test, ACL, QoS and SFP DDM function
- Management and maintenance: IPv4 and IPv6 management, PoE management; Support Web, SNMP, CLI, Telnet/SSH management method; Support user management, system log, configuration upload/download through web interface, firmware upgrade via HTTP/TFTP/USB
- Support G.8032 ERPS protocol, recovery time $\leq 20\text{ms}$
- Support 6KV surge protection and ESD: Air-15kV, Contact-8kV Protection
- IP40 fan-less, rack-mount or Din-rail hardware design optional
- Operation temperature: $-40\text{ }^{\circ}\text{C} \sim +75\text{ }^{\circ}\text{C}$

LT-IS6528XGP-4XS16GT8GC-2BT



16*10/100/1000Base-T+8*Gigabit Combo+ 4*1G/2.5G/10GBase-X SFP+
Layer 3 Managed Industrial Rack-mount PoE++ Switch, 2BT

LT-IS6528XGP-4XS24GT-U-2BT



24*10/100/1000Base-T + 4*1G/2.5G/10GBase-X SFP+
Layer 3 Managed Industrial Rack-mount PoE++ Switch, 2BT

LT-IS6528XGP-4XS24GT-4BT Series



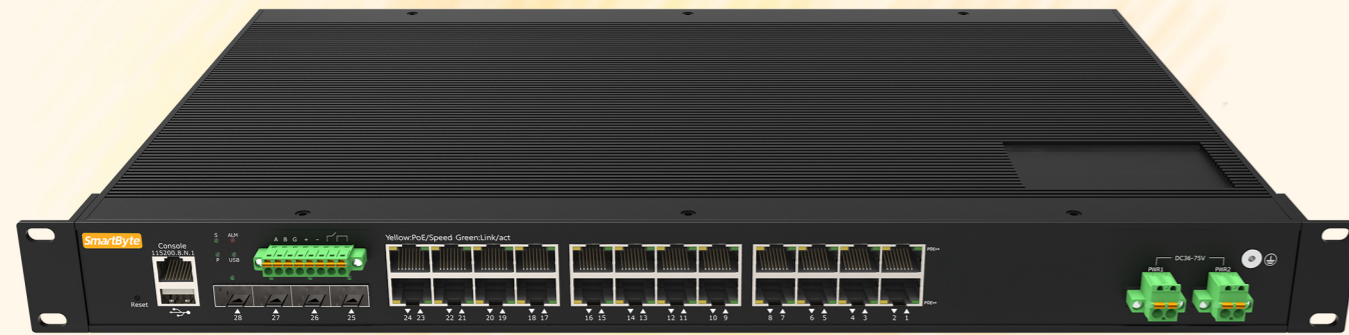
24*10/100/1000Base-T PoE + 4*1G/2.5G/10GBase-X SFP+
Layer 3 Managed Industrial PoE++ Switch, 4BT

LT-IS6520XGP-4XS16GT-4BT Series



16*10/100/1000Base-T PoE + 4*1G/2.5G/10GBase-X SFP+
Layer 3 Managed Industrial PoE++ Switch, 4BT

Layer 2+ Managed Industrial PoE++ Switches



Features

- DC/DC redundant power supply with polarity reverse/over-voltage/over-current protection
- Complies with IEEE802.3af PoE, IEEE802.3at PoE+ and IEEE802.3bt PoE++ standard
- Support USB one key configuration and upgrading
- Support DI/DO/RS485/Modbus
- Layer 3 feature: Support IPv4/IPv6 static routing
- Layer 2 features: VLAN; ERPS, STP/RSTP/MSTP; Link aggregation, IGMP snooping, port mirroring, QinQ, 802.1X, port isolation, RMON, NTP client, DHCP snooping/client, Ping/Tracert test, ACL, QoS and SFP DDM function
- Management and maintenance: IPv4 and IPv6 management, PoE management; Support Web, SNMP, CLI, Telnet/SSH management method; Support user management, system log, configuration upload/download through web interface, firmware upgrade via HTTP/TFTP/USB
- Support G.8032 ERPS protocol, recovery time ≤20ms
- Support 6KV surge protection and ESD: Air-15kV, Contact-8kV Protection
- IP40 fan-less, rack-mount or Din-rail hardware design optional
- Operation temperature: -40 °C ~+ 75 °C

10G Uplink Layer 2+ Series

LT-IS6328XGP-4XS16GT8GC-2BT



16*10/100/1000Base-T+8*Gigabit Combo+ 4*1G/2.5G/10GBase-X SFP+
Layer 2+ Managed Industrial Rack-mount PoE++ Switch, 2BT

LT-IS6328XGP-4XS24GT-U-2BT



24*10/100/1000Base-T + 4*1G/2.5G/10GBase-X SFP+
Layer 2+ Managed Industrial Rack-mount PoE++ Switch, 2BT

LT-IS6328XGP-4XS24GT-4BT Series



24*10/100/1000Base-T PoE + 4*1G/2.5G/10GBase-X SFP+
Layer 2+ Managed Industrial PoE++ Switch, 4BT

LT-IS6320XGP-4XS16GT-4BT Series



16*10/100/1000Base-T PoE + 4*1G/2.5G/10GBase-X SFP+
Layer 2+ Managed Industrial PoE++ Switch, 4BT

Full Gigabit Layer 2+ Series

LT-IS6328GP-4GX16GT8GC-2BT



16*10/100/1000Base-T + 8*Gigabit Combo + 4*1G/2.5GBase-X SFP
Layer 2+ Managed Industrial Rack-mount PoE++ Switch, 2BT

LT-IS6328GP-4GX24GT-U-2BT



24*10/100/1000Base-T + 4*1G/2.5GBase-X SFP
Layer 2+ Managed Industrial Rack-mount PoE++ Switch, 2BT

LT-IS6328GP-4GX24GT-4BT Series



24*10/100/1000Base-T PoE + 4*1G/2.5GBase-X SFP
Layer 2+ Managed Industrial PoE++ Switch, 4BT

LT-IS6320GP-4GX16GT-4BT Series



16*10/100/1000Base-T PoE + 4*1G/2.5GBase-X SFP
Layer 2+ Managed Industrial PoE++ Switch, 4BT

Layer 2 Managed Industrial PoE++ Switches



Features

- Redundant DC/DC power supply with polarity reverse/over-voltage/over-current protection
- Complies with IEEE802.3af PoE, IEEE802.3at PoE+ and IEEE802.3bt PoE++ standard
- USB one key configuration and upgrading optional
- DI/DO/RS485/Modbus are optional
- Layer 2 features: VLAN; ERPS, STP/RSTP/MSTP; Link aggregation, IGMP snooping, port mirroring, QinQ, 802.1X, port isolation, RMON, NTP client, DHCP snooping/client, Ping/Tracert test, ACL, QoS and SFP DDM function
- Management and maintenance: IPv4 and IPv6 management, PoE management; Support Web, SNMP, CLI, Telnet/SSH management method; Support user management, system log, configuration upload/download through web interface, firmware upgrade via HTTP/TFTP/USB
- Support G.8032 ERPS protocol, recovery time $\leq 20\text{ms}$
- Support 6KV surge protection and ESD: Air-15kV, Contact-8kV Protection
- IP40 fan-less, rack-mount/Din-rail hardware design optional
- Operation temperature: $-40\text{ }^{\circ}\text{C} \sim +75\text{ }^{\circ}\text{C}$

10G Uplink Layer 2 Series

LT-IS6228XGP-4XS16GT8GC-2BT



16*10/100/1000Base-T+8*Gigabit Combo+ 4*1G/2.5G/10GBase-X SFP+ Managed Industrial Rack-mount PoE++ Switch, 2BT

LT-IS6228XGP-4XS24GT-U-2BT



24*10/100/1000Base-T + 4*1G/2.5G/10GBase-X SFP+ Managed Industrial Rack-mount PoE++ Switch, 2BT

LT-IS6228XGP-4XS24GT-4BT Series



24*10/100/1000Base-T PoE + 4*1G/2.5G/10GBase-X SFP+ Managed Industrial PoE++ Switch, 4BT

LT-IS6220XGP-4XS16GT-4BT Series



16*10/100/1000Base-T PoE + 4*1G/2.5G/10GBase-X SFP+ Managed Industrial PoE++ Switch, 4BT

Full Gigabit Layer 2 Series

LT-IS6228GP-4GX16GT8GC-2BT



16*10/100/1000Base-T + 8*Gigabit Combo + 4*1G/2.5GBase-X SFP Managed Industrial Rack-mount PoE++ Switch, 2BT

LT-IS6228GP-4GX24GT-U-2BT



24*10/100/1000Base-T + 4*1G/2.5GBase-X SFP Managed Industrial Rack-mount PoE++ Switch, 2BT

LT-IS6228GP-4GX24GT-4BT Series



24*10/100/1000Base-T PoE + 4*1G/2.5GBase-X SFP Managed Industrial PoE++ Switch, 4BT

LT-IS6220GP-4GX16GT-4BT Series



16*10/100/1000Base-T PoE + 4*1G/2.5GBase-X SFP Managed Industrial PoE++ Switch, 4BT

LT-IS6212GP-4GX8GT-2BT Series



8*10/100/1000Base-T PoE + 4*1G/2.5GBase-X SFP Managed Industrial PoE++ Switch, 2BT

LT-IS6210GP-2GX8GT-2BT Series



8*10/100/1000Base-T PoE + 2*1G/2.5GBase-X SFP Managed Industrial PoE++ Switch, 2BT

LT-IS6206GP-2GX4GT-2BT Series



4*10/100/1000Base-T PoE + 2*1G/2.5GBase-X SFP Managed Industrial PoE++ Switch, 2BT

Unmanaged Industrial Ethernet Switches



Features

- DC 12~58V input, redundant power supply with polarity reverse/over-voltage/over-current protection
- Support one channel output relay alarm for DC power failure (optional)
- Powerful Dip switch function:
 1. Port isolation or link aggregation;
 2. Flow control;
 3. QoS(1-2 ports);
 4. Broadcast storm restrain
- Support 10K Bytes Jumbo frame
- Support 4KV/6KV surge protection and ESD: Air-15kV, Contact-8kV Protection
- IP40 fan-less and Din-rail hardware design
- Operation temperature: -40 °C ~ +75°C

Full Gigabit Series

LT-IS6018G-2GX16GT



16*10/100/1000Base-T RJ45 ports + 2*1000Base-X SFP

LT-IS6016G-16GT



16*10/100/1000Base-T RJ45 ports

LT-IS6016G-8GX8GT



8*10/100/1000Base-T RJ45 ports + 8*1000Base-X SFP

LT-IS6012G-4GX8GT



8*10/100/1000Base-T RJ45 ports + 4*1000Base-X SFP

LT-IS3010G-2GX8GT



8*10/100/1000Base-T RJ45 ports + 2*1000Base-X fiber ports

LT-IS3009G-1GX8GT



8*10/100/1000Base-T RJ45 ports + 1*1000Base-X fiber port

LT-IS6008G-8GT



8*10/100/1000Base-T RJ45 ports

LT-IS3006G-2GX4GT



4*10/100/1000Base-T RJ45 ports + 2*1000Base-X SFP

LT-IS3006G-1GX5GT



5*10/100/1000Base-T RJ45 ports + 1*1000Base-X SFP

LT-IS3005G-5GT



5*10/100/1000Base-T RJ45 ports

LT-IS3005G-1GX4GT



4*10/100/1000Base-T RJ45 ports + 1*1000Base-X fiber ports

Fast Ethernet Series

LT-IS3010XF-2GX8TX



8*10/100Base-TX RJ45 ports + 2*1000Base-X fiber ports

LT-IS3009F-1FX8TX



8*10/100Base-TX RJ45 ports + 1*100Base-FX fiber ports

LT-IS3008F-8TX



8*10/100Base-TX RJ45 ports

LT-IS3008F-2FX6TX



6*10/100Base-TX RJ45 ports + 2*100Base-FX fiber ports

LT-IS3006F-2FX4TX



4*10/100Base-TX RJ45 ports + 2*100Base-FX fiber ports

LT-IS3005F-5TX



5*10/100Base-TX RJ45 ports

LT-IS3005F-1FX4TX



4*10/100Base-TX RJ45 ports + 1*100Base-FX fiber ports

Unmanaged Industrial PoE Switches



Features

- DC 44~57V input, redundant power supply with polarity reverse/over-voltage/over-current protection
- Complies with IEEE802.3af PoE and IEEE802.3at PoE+ standard
- Support one channel output relay alarm for DC power failure (optional)
- Powerful Dip switch function:
 1. Port isolation or link aggregation;
 2. 250m long distance
 3. QoS(1-2 ports);
 4. PoE watchdog
- Support 10K Bytes Jumbo frame
- Support 4KV/6KV surge protection and ESD: Air-15kV, Contact-8kV Protection
- IP40 fan-less and Din-rail hardware design
- Operation temperature: -40 °C ~ +75°C

Full Gigabit Series

LT-IS6018GP-2GX16GT



16*10/100/1000Base-T RJ45 PoE ports + 2*1000Base-X SFP

LT-IS6016GP-16GT



16*10/100/1000Base-T RJ45 PoE ports

LT-IS6016GP-8GX8GT



8*10/100/1000Base-T RJ45 PoE ports + 8*1000Base-X SFP

LT-IS6012GP-4GX8GT



8*10/100/1000Base-T RJ45 PoE ports + 4*1000Base-X SFP

LT-IS3010GP-2GX8GT



8*10/100/1000Base-T RJ45 PoE ports + 2*1000Base-X fiber ports

LT-IS3009GP-1GX8GT



8*10/100/1000Base-T RJ45 PoE ports + 1*1000Base-X fiber port

LT-IS6008GP-8GT



8*10/100/1000Base-T RJ45 PoE ports

LT-IS3006GP-2GX4GT



4*10/100/1000Base-T RJ45 PoE ports + 2*1000Base-X SFP

LT-IS3006GP-1GX5GT



4*10/100/1000Base-T RJ45 PoE ports + 1*1000Base-X SFP + 1*10/100/1000Base-T RJ45

LT-IS3005GP-5GT



5*10/100/1000Base-T RJ45 PoE ports

LT-IS3005GP-1GX4GT



4*10/100/1000Base-T RJ45 PoE ports + 1*1000Base-X fiber ports

Fast Ethernet Series

LT-IS3010XFP-2GX8TX



8*10/100Base-TX RJ45 PoE ports + 2*1000Base-X fiber ports

LT-IS3009FP-1FX8TX



8*10/100Base-TX RJ45 PoE ports + 2*100Base-FX fiber ports

LT-IS3008FP-8TX



8*10/100Base-TX RJ45 PoE ports

LT-IS3008FP-2FX6TX



6*10/100Base-TX RJ45 PoE ports + 2*100Base-FX fiber ports

LT-IS3006FP-2FX4TX



4*10/100Base-TX RJ45 PoE ports + 2*100Base-FX fiber ports

LT-IS3005FP-5TX



5*10/100Base-TX RJ45 PoE ports

LT-IS3005FP-1FX4TX



4*10/100Base-TX RJ45 PoE ports + 1*100Base-FX fiber ports

Industrial Media Converter



Features

- DC 12~58V input, redundant power supply with polarity reverse/over-voltage protection
- Support watchdog, it can reboot automatically if the device is frozen
- Support 1M large buffer
- Support 4KV surge protection and ESD: Air-15kV, Contact-8kV Protection
- IP40 fan-less and Din-rail hardware design with compact size (30*85*85mm)
- Operation temperature: -40 °C ~+75°C

Powerful Dip switch function:

	Dip 1	Dip 2	Dip 3	Dip 4
LT-IMC30F-E	LFP	Flow control	Broadcast storm restrain	10Kbytes jumbo frame
LT-IMC30F-1FX2TX-E	Port isolation	Flow control	Broadcast storm restrain	10Kbytes jumbo frame
LT-IMC30F-2FX2TX-E	Fiber redundant	Flow control	Broadcast storm restrain	10Kbytes jumbo frame
LT-IMC30G-E	LFP	Flow control	Broadcast storm restrain	100/1000M fiber port selection(ON=100M, OFF=1000M)
LT-IMC30G-1GX2GT-E	Port isolation	Flow control	Broadcast storm restrain	100/1000M fiber port selection(ON=100M, OFF=1000M)
LT-IMC30G-2GX2GT-E	Fiber redundant	Flow control	Broadcast storm restrain	100/1000M fiber port selection (ON=100/1000M adaptive, OFF=1000M)

Industrial Media Converter

LT-IMC30F-E



10/100Base-TX to 100Base-FX industrial media converter

LT-IMC30F-1FX2TX-E



2*10/100Base-TX to 1*100Base-FX industrial media converter

LT-IMC30F-2FX2TX-E



2*10/100Base-TX to 2*100Base-FX industrial media converter

LT-IMC30G-E



10/100/1000Base-T to 100/1000Base-X industrial media converter

LT-IMC30G-1GX2GT-E



2*10/100/1000Base-T to 1*100/1000Base-X industrial media converter

LT-IMC30G-2GX2GT-E



2*10/100/1000Base-T to 2*100/1000Base-X industrial media converter

Industrial PoE Media Converter



Features

- DC 44~57V input, redundant power supply with polarity reverse/over-voltage protection
- Complies with IEEE802.3af PoE and IEEE802.3at PoE+ standard
- Support 10K Bytes Jumbo frame and 1M large buffer
- Support 4KV surge protection and ESD: Air-15kV, Contact-8kV Protection
- IP40 fan-less and Din-rail hardware design with compact size(30*85*85mm)
- Operation temperature: -40 °C ~+75°C

Powerful Dip switch function:

	Dip 1	Dip 2	Dip 3	Dip 4
LT-IMC30FP-E	LFP	Flow control	250m long distance	PoE watchdog
LT-IMC30FP-1FX2TX-E	Port isolation	Flow control	250m long distance	PoE watchdog
LT-IMC30FP-2FX2TX-E	Fiber redundant	Flow control	250m long distance	PoE watchdog
LT-IMC30GP-E	LFP	100/1000M fiber port selection(ON=100M, OFF=1000M)	250m long distance (port 1)	PoE watchdog
LT-IMC30GP-1GX2GT-E	Port isolation	100/1000M fiber port selection(ON=100M, OFF=1000M)	250m long distance (port 1)	PoE watchdog
LT-IMC30GP-2GX2GT-E	Fiber redundant	100/1000M fiber port selection (ON=100/1000M adaptive, OFF=1000M)	250m long distance (port 1)	PoE watchdog

Industrial PoE Media Converter

LT-IMC30FP-E



10/100Base-TX to 100Base-FX industrial PoE media converter

LT-IMC30FP-1FX2TX-E



2*10/100Base-TX to 1*100Base-FX industrial PoE media converter

LT-IMC30FP-2FX2TX-E



2*10/100Base-TX to 2*100Base-FX industrial PoE media converter

LT-IMC30GP-E



10/100/1000Base-T to 100/1000Base-X industrial PoE media converter

LT-IMC30GP-1GX2GT-E



2*10/100/1000Base-T to 1*100/1000Base-X industrial PoE media converter

LT-IMC30GP-2GX2GT-E



2*10/100/1000Base-T to 2*100/1000Base-X industrial PoE media converter